

Ten reasons to buy a Fluke Visual IR Thermometer

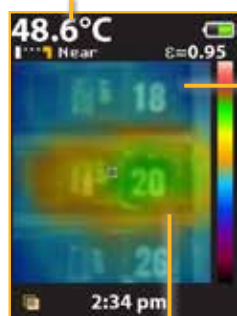
The award winning Fluke Visual IR Thermometers combine the convenience of a spot thermometer with the visual advantage of an infrared camera, creating a brand new tool category.

Application Note

[1. Designed to see it all]

Every Fluke Visual IR Thermometer has a built-in digital camera with a thermal heat map overlay to instantly identify the exact location of the problem.

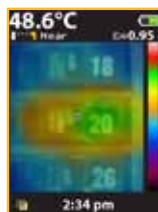
Centerpoint temperature (°C/°F)



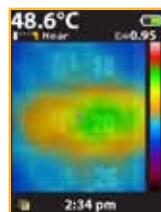
Thermal heat map overlay



25 % heat map



50 % heat map



75 % heat map

Digital image for context

Clearly see that breaker 20 is overloaded and communicate your findings.

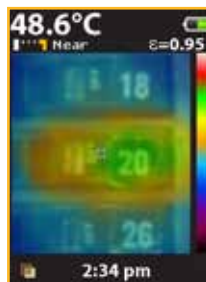
[2. Measure with confidence]

Traditional infrared thermometers may seem affordable and convenient, but they only show an average temperature of an area. The Fluke Visual IR Thermometer gives you the visual image of exactly what you are measuring.



Traditional IR thermometer

Optimized for single point measurements.



Visual IR Thermometer

Digital image with heat map overlay detects the exact location of the issue.



Fluke VT02
Visual IR
Thermometer

Fluke VT04
Visual IR
Thermometer



Cameras and Imaging Equipment Category

[3. Detect issues instantly]

Eliminate the tedious tasks of taking multiple grid readings. Every Fluke Visual IR Thermometer has a built-in digital camera with a thermal heat map overlay to instantly identify the exact location of the problem.



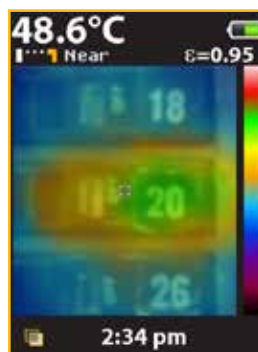
[4. Professionally document your work]

Producing a professional report with the included SmartView® Software is just as powerful as the tool itself. Easily communicate issues or document repairs that have been made.



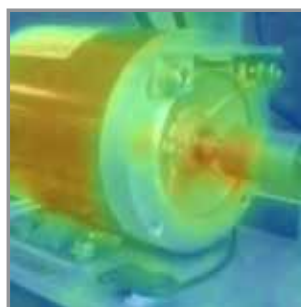
[5. No training required]

The Fluke Visual IR Thermometer is an ideal frontline troubleshooting tool that can uncover issues right out of the box with no training required. For example, it is apparent that breaker 20 is overloaded, requiring further investigation.

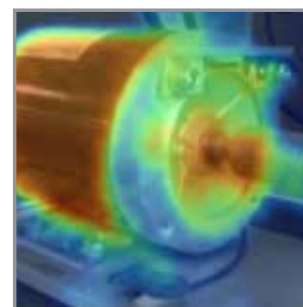


[6. Establish baselines for preventive maintenance]

Monitor mission critical equipment over time while inspecting under similar operating conditions to identify potential problems early. The VT04 also offers automated alarm monitoring to allow you to capture images unattended.



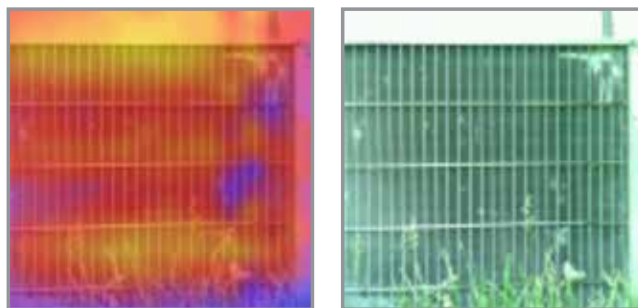
Baseline heat map image



Heat map image taken at later date indicates further mechanical inspection required

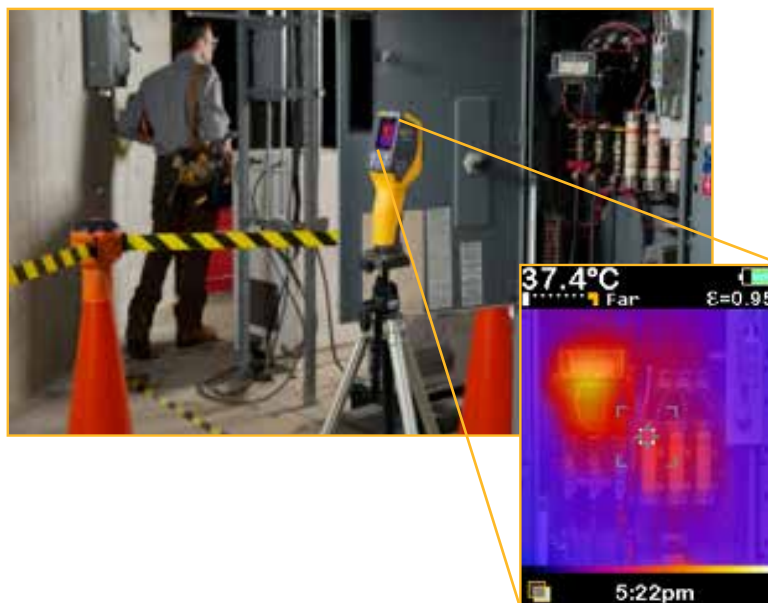
[7. Uncover issues you may have missed]

In this typical AC condenser, you can quickly see the uneven distribution of heat in the center row, which may indicate a potential issue. This could easily be missed with a traditional IR thermometer.



[8. Troubleshoot intermittent issues]

The auto monitoring feature in the VT04 allows you to troubleshoot intermittent issues that may be challenging to discover, such as looking for connection or overload conditions in combination starters. Set the time lapse alarm, and capture images in 30 second to 1 hour intervals. Images are saved to the included SD card.

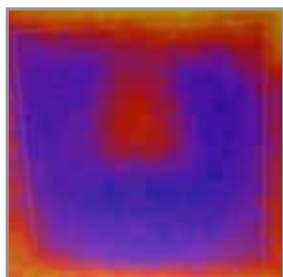


[9. Carry it everywhere]

While many infrared cameras claim to be compact, the Fluke Visual IR Thermometers are specifically designed to fit in your pocket.



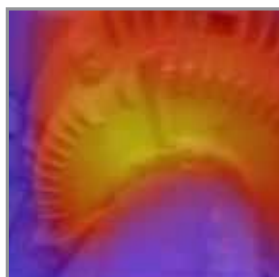
[10. Just as versatile as the issues you are asked to troubleshoot]



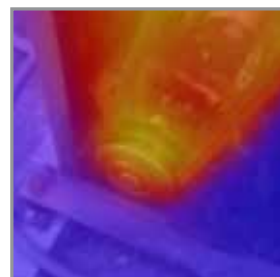
Potentially faulty cold air damper



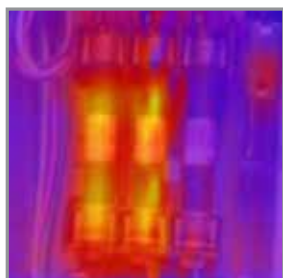
Inspection of hydronic floor heat



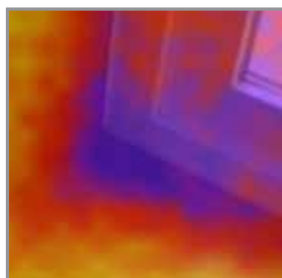
Overheated motor output



Thermal inspection of pulley



Unbalanced load in 3 phase supply



Energy loss around window

Set yourself up for success.

Follow a few simple steps that will help you troubleshoot issues in facilities applications:

- Wear proper PPE for your environment, according to your local, national, and company protocols. Always remain the proper distance away from potentially hazardous equipment.
- Have direct access to the target you are scanning. Disassembly may be required around your target.
- When you've found a potential issue using the blended heat map, move closer to take a center-point temperature measurement.
- Understand how surface material characteristics such as emissivity can influence your readings. For more information visit: www.fluke.com/emissivity or www.fluke.com/emissivityexplanation.

Fluke Corporation
PO Box 9090, Everett, WA 98206 U.S.A.

Fluke Europe B.V.
PO Box 1186, 5602 BD
Eindhoven, The Netherlands

For more information call:
In the U.S.A. (800) 443-5853 or
Fax (425) 446-5116
In Europe/M-East/Africa +31 (0) 40 2675 200 or
Fax +31 (0) 40 2675 222
In Canada (800)-36-FLUKE or
Fax (905) 890-6866
From other countries +1 (425) 446-5500 or
Fax +1 (425) 446-5116
Web access: <http://www.fluke.com>

©2013 Fluke Corporation.
Specifications subject to change without notice.
Printed in U.S.A. 8/2013 6000400A_EN

Modification of this document is not permitted without written permission from Fluke Corporation.